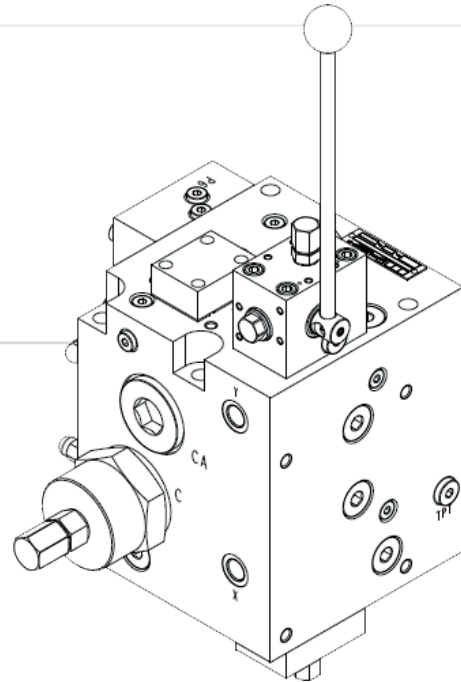


MODULAR WINCH UNITS

6MB for flow 120-650 lpm

Winch control manifolds for variable pumps

- Pipe mounted model
- Compact design
- Pressure compensator system for load independent control of hydraulic motor
- Load control valve of spool design
- Actuations
 - Manual
 - Hydraulic remote
 - Proportional electric operation
 - Combination of those above
- Options for
 - Brake release valve
 - Remote operated pressure relief A - T/B for tension control
 - Two speed selector valve
 - Up to 5 NG6 flanges for operation of external functions
 - Prepared to be fitted directly on hydraulic motor by use of an intermediate adapter plate



DESCRIPTION	DATA	
Flow ranges	200	120-240 l/min
	320	200-320 l/min
	450	300-500 l/min
	650	450-650 l/min
Weight	200/320	56 kg
	450/650	96 kg
Max pressure	P, A, B	350 bar
	T	20 bar
Pilot pressure	5-20 bar	
Test pressure	420 bar	
Fluid temperature range	-20°C to +70°C	
Ambient temperature range	-20°C to +50°C	

